



Snappy Installer

Introduction

The Snappy Installer functions to install _Snappy_ Software correctly while insuring proper file integrity. It was created for three main reasons:

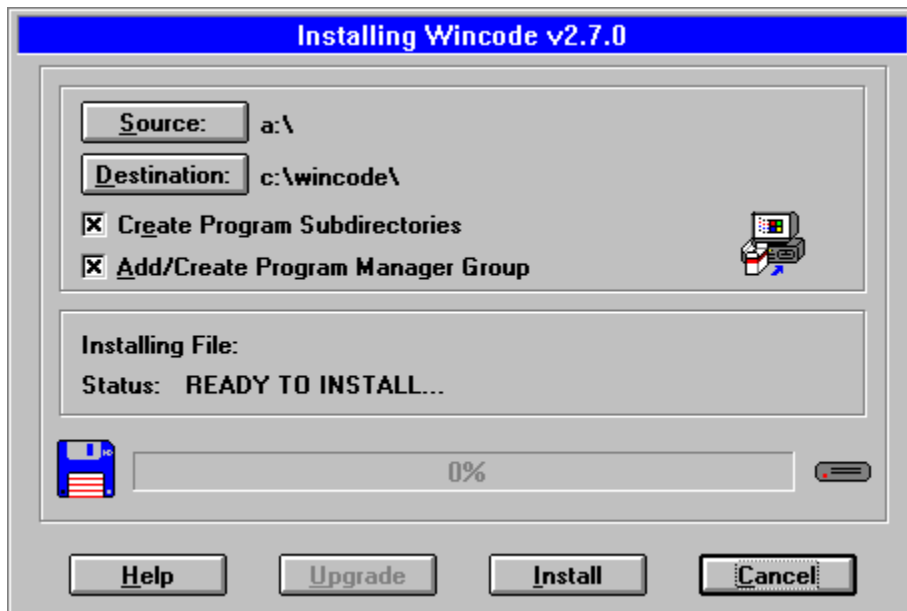
- 1) To allow users to easily upgrade from older versions of Wincode (the INI file structure changed from version to version which caused problems when upgrading).
- 2) To create a program to insure that all files are being distributed intact.
- 3) To create a *programmable* program. The Installer is configured entirely from the INF file. Future updates (bug fixes) of Wincode need not include all files.

NOTE: Interested developers can contact us for info on using the Snappy Installer for their own projects...**FREE**. See below for contact info.

Using the Installer

Before running the Installer, make sure all program files (as listed in the README.TXT) are located in the same directory or on the proper disk (for multi-disk installations). Using Program/File Manager, **RUN** the INSTALL.EXE program. When the install program is executed, you will see a full screen display with a centered dialog providing last minute details and some system requirement information. Choose OK and you will see the main dialog box as shown below. **NOTE:** You will first be prompted for a default destination directory.

Click on any area to obtain more information:



Installation progress is displayed graphically as each file is copied and/or expanded. Snappy Installer will also properly Date/Time stamp each file it transfers. The Time stamp can be used to quickly determine a program version; for example, a file stamped 2:05:00 is actually

version 2.5, etc. The user is notified of any errors detected during installation.

Canceling installation does **not** delete the installed files. The Snappy Installer will finish its current operation and then stop. You are responsible for cleaning up the mess :-)

NOTE: If you have changed the location of the **WINCODE.INI** file, you **must** temporarily move it back to the Windows directory to allow the Installer to make the proper updates.

Unsuccessful Installation

A Log file is created in your **TEMP** directory (as set in your environment -> you will be notified after install where the file is located). If the installation fails for any reason, check the contents of this file. The following should be noted:

- 1)** If one of the required files is missing, Installer will indicate an Unsuccessful Installation. See note #3 below.
- 2)** A general **ERROR** message is given if Installer encounters problems copying/expanding appropriate files (i.e. the disk is full, a DLL is in use, etc). Check your destination drive, exit all running software (not including Program Manager! ;-)) and try re-installing the software.
- 3)** Installer updates and maintains the **VERSION** section in the WINCODE.INI file. Any errors encountered during installation will set **VERSION=ERROR**. If you are sure that all files are correct and still receive an **Unsuccessful Installation** error (such as when a file is missing, etc), you should manually edit your WINCODE.INI file to correct this value (the format is: **Version=x.x.x** where x is a number). Refer to the **ABOUT** dialog for correct version information.
- 4)** If one or more of the files does not function properly, use the Snappy SUM.EXE program to calculate a Checksum and refer to the CHECKSUM.REF file. We will replace **damaged** files Free.
- 5)** If you experience problems using the Snappy Installer, please contact **_Snappy_** at one of the addresses listed below. **Please include a full description of the problem including Error messages.**

Files:

- INSTALL.EXE
—————▶ the main executable program
- INSTALL.INF
—————▶ the install data file
- INSTALL.HLP
—————▶ the install HELP file
- CHECKSUM.REF
—————▶ the Checksum Reference file

Contacting **_Snappy_**

- For Installer Info: [**installer@snappy-software.com**](mailto:installer@snappy-software.com)
- For Bug Reports: [**bugs@snappy-software.com**](mailto:bugs@snappy-software.com)
- For Comments: [**feedback@snappy-software.com**](mailto:feedback@snappy-software.com)

Vist our HomePage at:

[**http://snappy-software.com/**](http://snappy-software.com/)

MIRROR HomePage (online 24hrs/7days):

[**http://www.global2000.net/users/snappy/snappy/**](http://www.global2000.net/users/snappy/snappy/)

Use this to select a source directory which contains the files to be installed. By default, this directory is set to the INSTALL.EXE starting directory.

Use this to select a destination directory for the program files. Any existing files in this directory **will be overwritten**. You may enter a directory which does **not** exist and Snappy Installer will try to create it for you. This directory **must** be set before installation can proceed.

Use this option if you want Snappy Installer to create the default directories needed by Wincode. This option will overwrite previous configuration settings. Five sub-directories are created under the main program directory: 1) **Decode**; 2) **Encode**; 3) **Files**; 4) **Temp** and 5) **Zips**.

Use this option if you want Snappy Installer to create a Program Manager group and Icons for various files. You can have the Installer create a new group or add the icons to an existing group.

This field lists the file currently being installed.

This field lists the status of the installation. It indicates both individual file status and the progress of the entire install operation.

The progress bar graphically displays the status of the installation.

Hi there! I'm the Snappy Installer Icon.

This button launches INSTALL.HLP (this file).

When the Install program is initially started, this button is disabled. If Snappy Installer detects a previous version of WINCODE.INI, this option will be enabled (after you select a Destination directory). A Previous Version dialog will pop-up indicating the supported versions you can upgrade from with the current INSTALL.INF. Select the proper version number and installation will commence. **NOTE:** Installer will try to determine your previous version for you; if unsuccessful, all versions are listed. If the version you are currently running is not listed, select the next version down.

When the Install program is initially started, this button is disabled. Selecting a Destination directory will enable this option. Installation begins immediately. **NOTE:** If a previous version of Wincode is detected on your system, Installer will warn you that **installing** (rather than **upgrading**) may overwrite your current configuration.

Choose this if you wish to exit the install program without installing Wincode.

